

577 Congress Park Drive  
Dayton, Ohio 45459  
www.panini.com

## Panini 4.0.2 Universal Installer

### Description:

The new universal installer has been built as an intelligent installer including features to support our My Vision X, Vision X, VXA4, I:Deal and wl:Deal scanners. This version of the installer has command line features giving control over the installation process.

The installer has a built-in “wizard” mode, allowing users to create a custom installer package. The Universal Installer is constructed to offer different capabilities depending on individual needs for generating custom installation packages.

To generate custom installer packages for all Panini modules, the Setup.Exe in the root folder should be used. This will enable installation, modification and removal of all Panini modules or components. You can also generate custom installer packages for individual modules or components, but it is important to note that if you choose to uninstall a module such as the Avantor Control Module or the MFS Extensions (Thermal Receipt Printer and Mag Stripe Reader), all other installed modules or components will also be uninstalled.

To avoid unintentionally uninstalling modules or components, the folders for the Avantor Control module and the MFS Extensions can be used to generate custom installer packages by using the wizard command line option with the executable in the individual module's folder. For the Avantor Control Module, the executable to use is ControlModule-Client.exe, for the MFS Extensions, the executable to use is VXMFSExtensions.exe.

### Supported Operating Systems:

- **Windows XP 32-bit**
- **Windows XP 64-bit**
- **Windows Vista 32-bit**
- **Windows Vista 64-bit**
- **Windows 7 32-bit**
- **Windows 7 64-bit**

### Included VisionAPI and Engine Versions:

- **API Version:** 4.0.2
- **VX Engine Version** 2.0.4
- **I:Deal Engine Version** 2.0.4

- **wl:Deal Engine Version**      **2.0.4**
- **VXA4 Engine Version**      **2.0.4**

## **Installer Enhancements Since Version 3.3.1 Packages Release 1/8/2010**

- **Preemptive “RunOnce” key checking and creation.**

The driver installer depends upon the existence of the RunOnce key in the registry. The installer now actively checks for a RunOnce key that may have been removed by another installation package. If the RunOnce key is missing, the installer re-creates it to ensure a successful driver installation.

- **Driver Installer Enhanced Logic**

The driver installer has been modified to validate the success of the driver installation. If it fails, the driver installer re-runs a secondary method to execute the driver installation to resolve any potential “error 2” results during driver installation.

- **Un-installation Disk Prompt**

The installer has added logic to resolve an un-installation prompting for a source disk when a previous version of the driver may have left an older version of the driver’s .inf file.

- **Driver Installation/Un-installation Log**

All driver installations and un-installations are logged in the “Windows” directory with a filename of wdreg.log.

## Usage:

The command line parameters are outlined below. These command line parameters map to specific features and functions controlling the behavior of the installation, update, modification and un-installation processes. The parameters are case in-sensitive.

Example:

```
C:\>Setup.exe silent InstallOnly USB API VXENGINE
```

## Installation Modes

The installer has 4 available modes: install, upgrade, modify and wizard mode (for a create a custom installation package from redistribution).

**Install:** The installer recognizes there is no previous version of the installer on the PC and is running as a new installation on the workstation.

**Upgrade:** The installer recognizes that a previous version of the installer is present on the workstation and will operate in an upgrade matter, installing the features selected by either the command line parameters (silent mode) or the user interface (non-silent), and removing the previous version of the installer from the workstation.

**Modify:** The installer recognizes that the same version of the installer is already installed on the workstation. The installer then allows you to either modify/change installed features, repair the installation for the currently installed features or remove the installation all together.

**Wizard:** Using the wizard command line switch, the installer runs in wizard mode. Wizard mode does not install the software on the workstation, but instead walks you through choosing the special installation options and features, and generating only the necessary files for the installation package and command line syntax in the destination directory for redistribution.

---

## Command Line Options

### Install Options

- **Silent:** Run the installation in an unattended silent mode. This removes all user interfaces and dialog boxes from being visible to the end user. The only exception is the initialization dialog box. This cannot be removed.
- **InstallOnly:** This parameter signifies to only do an installation or an upgrade. If the software is already installed, it will NOT do an un-installation. Instead, it will automatically cancel out of the installer. In this instance, the setup.exe process will return a negative return code. This parameter should prevent inadvertent un-installations or modifications from occurring.
- **UninstallModeOnly:** This parameter tells the installer that it should only be un-installed if it exists on the system. If the software is not installed, it will not install it. To un-install silently, this parameter must be specified.
- **Wizard:** The installer will be run in wizard mode to generate a custom installer package. This is covered in more detail below.

### Feature Options

The following parameters tell the installer which features you want installed, upgraded or modified.

- **PaniniOCR:** Installs or upgrades the PaniniOCR (MICR+OCR) feature.
  - **API:** Installs the VisionAPI on the workstation.
  - **USB:** Installs the Panini USB driver for the My Vision X, Vision X, VXA4, I:Deal and wI:Deal.
  - **VXEngine:** Installs the Vision X engine. The Vision X engine is necessary when using a My Vision X or Vision X scanner.
  - **IDEngine:** Installs the I:Deal engine. The I:Deal engine is necessary when using an I:Deal scanner.
  - **WEngine:** Install the wI:Deal Engine
  - **VXA4Engine:** Install the Vx-A4Pg Engine
  - **MultiDemo:** Installs the MultiDemo application, to demonstartes the features of all Panini scanners.
  - **Avantor:** Install the Avantor Module
  - **ControlMod:** Install the Avantor Control Module
  - **VxExtOpos:** Install the OPOS Receipt Printer Driver
  - **VxExtWhql:** Install the WHQL (Windows) Receipt Printer Driver
  - **VxExtSCR:** Install the Mag Stripe Card Reader Driver
-

- **AllFeatures:** Installs all features. Can be used instead of specifying all individual feature names.

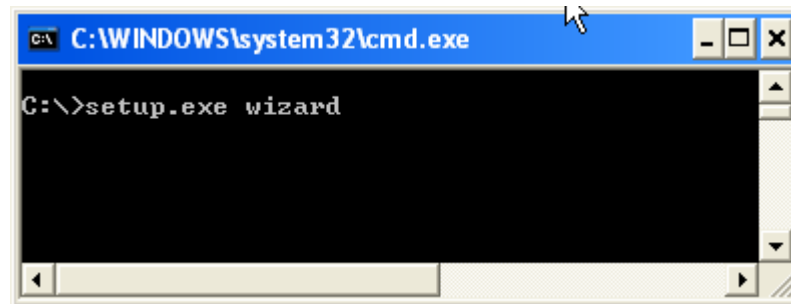
## USB Options

- **UnplugUSB:** Before installing, this unplugs the scanner from the operating system by removing any existing instance of our VendorID and Product ID.
- **RescanUSB:** After installation, this rescans the USB bus for new devices.

## Wizard Mode

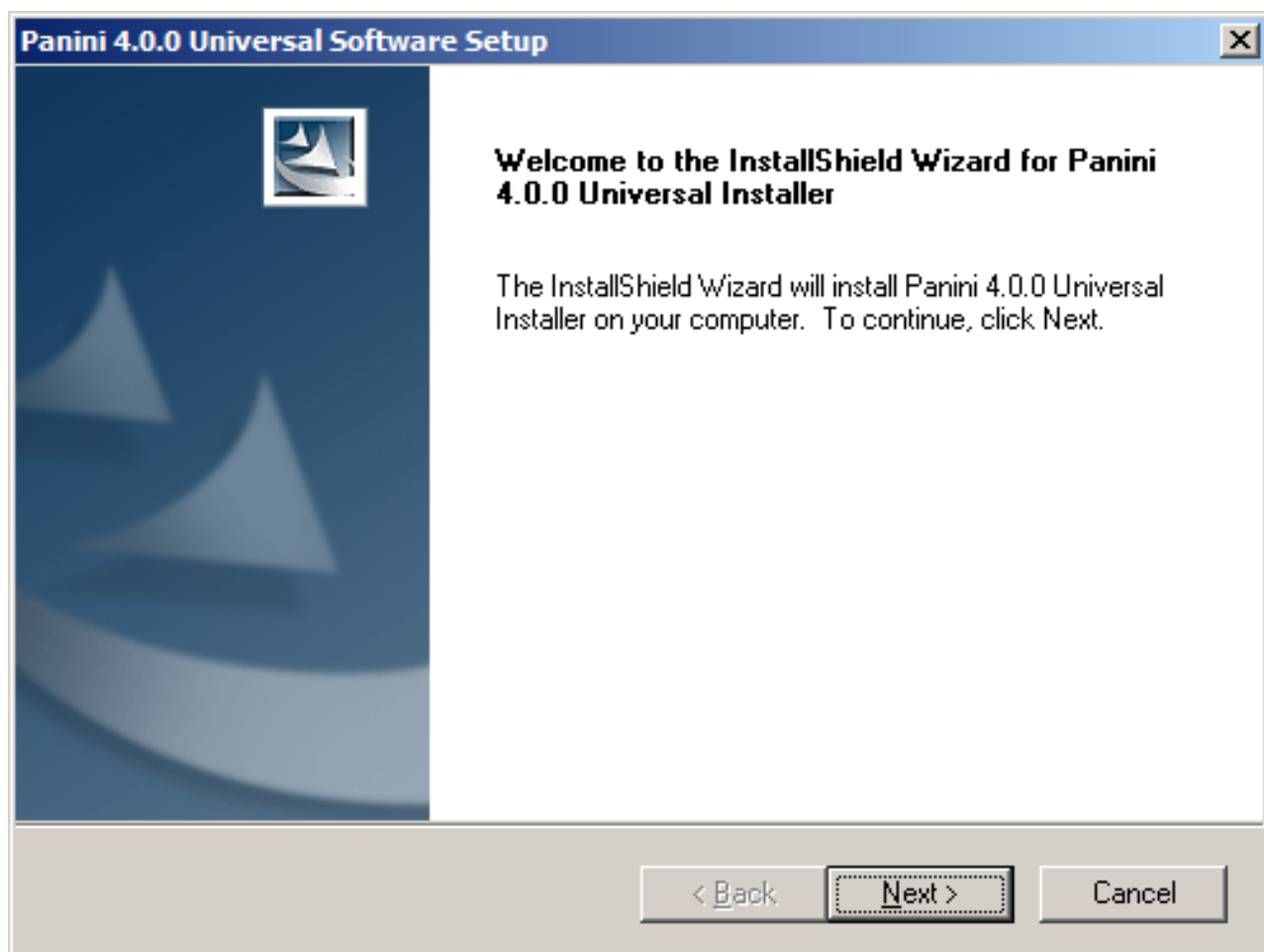
The wizard mode has been implemented to easily walk a user through creating a customized installer package with the necessary files and command line syntax. The steps below describe using the wizard mode to create your custom package for deployment.

1. To start wizard mode, run the setup.exe from the command line prompt, in the path where the Universal Installer resides, with only the 'wizard' parameters specified.



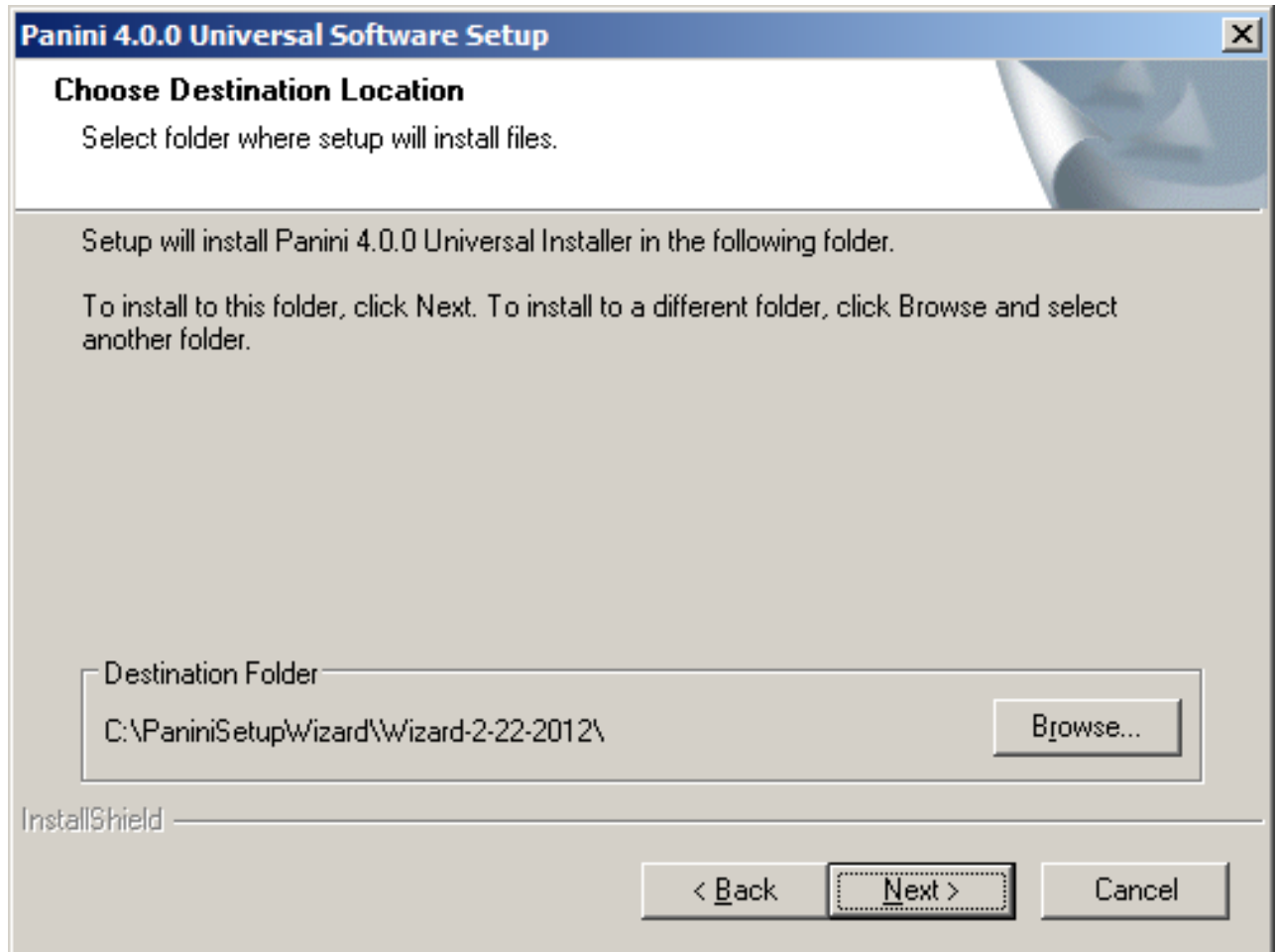
2. You will then see the welcome page for the wizard.

Click the 'Next' button to continue with the first step of the wizard.

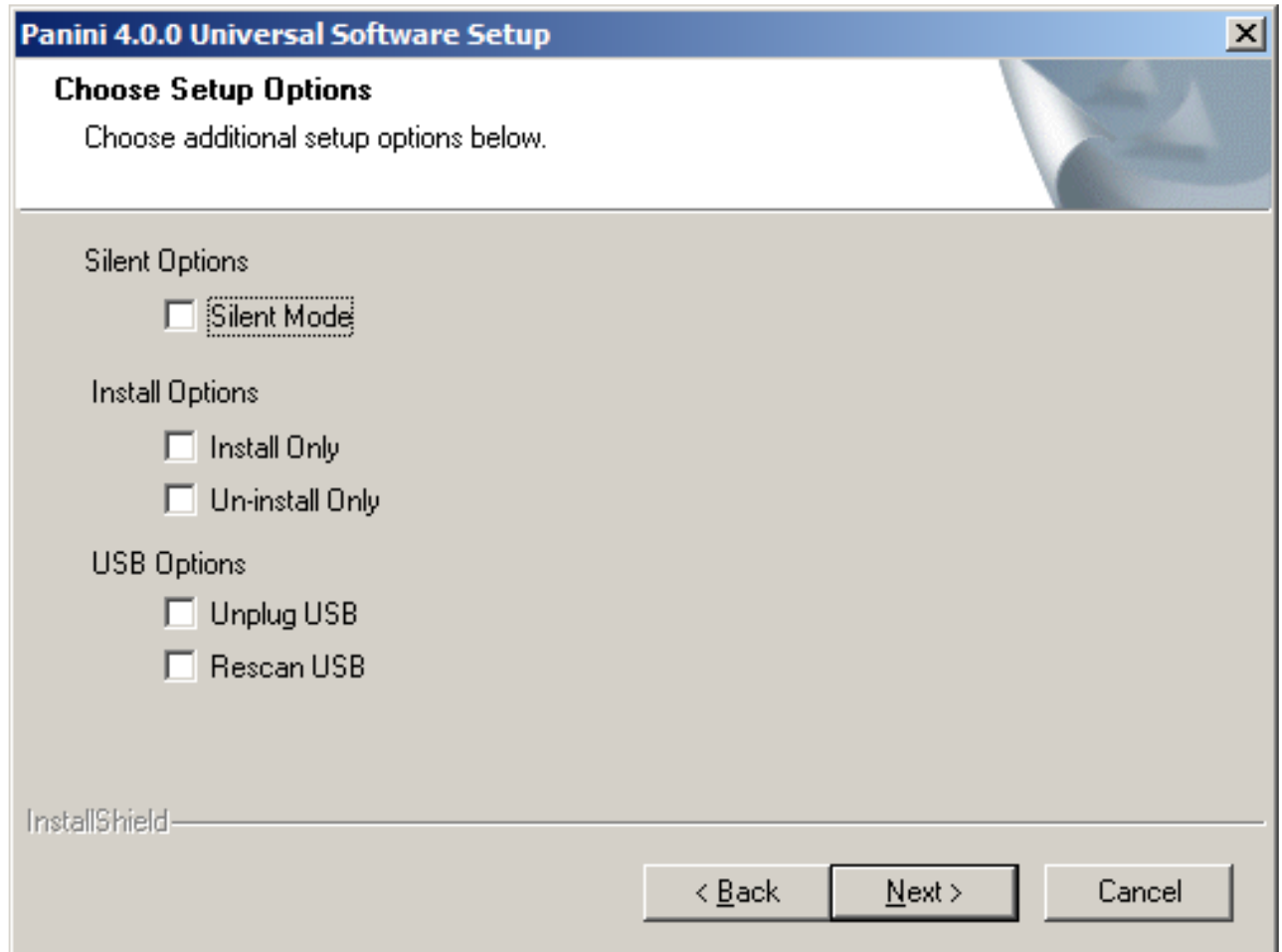




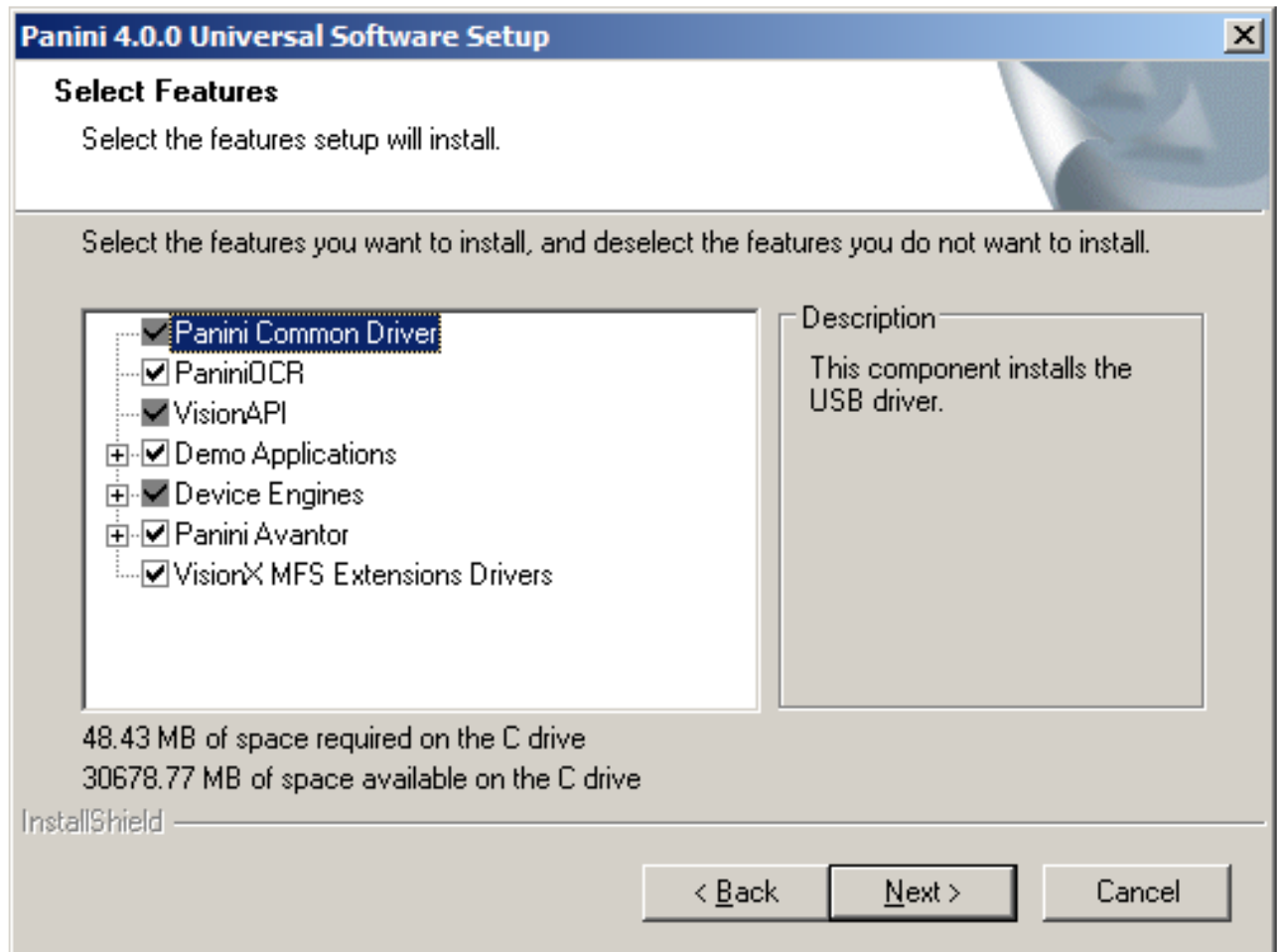
3. You will then be asked to choose the destination location for the installer package files. Please note that this defaults to the same directory as when running the installer without the wizard mode. You may want to change this directory to a different location if you plan on running the installer in a standard mode without changing the destination location. After selecting your destination location, click the 'Next' button to continue



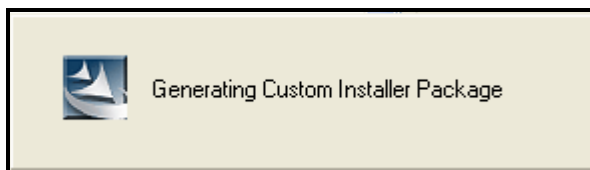
4. The next screen will allow you to add install and USB options. You can opt not to use any of these. Please note that if you select 'Install Only' you cannot choose 'Un-install Only.' The reverse of this is the same as well. If you choose 'Un-install Only' you cannot select 'Install Only.' When you are finished selecting these options, click the 'Next' button to continue.



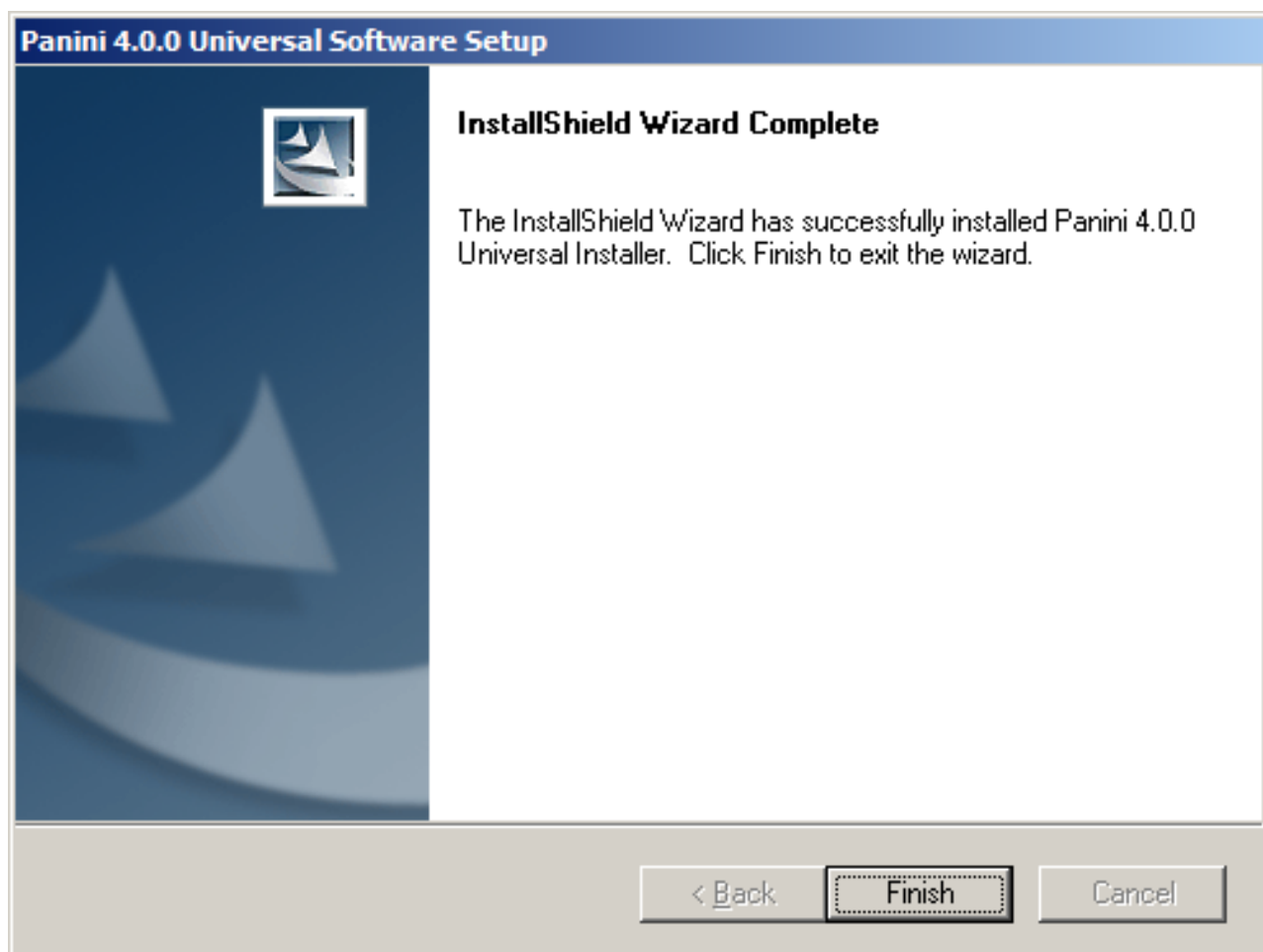
5. The next screen allows you to select the features that you want to include with your package. Select the features that you would like to have included in your package, or de-select the features that you would not like to be included. When you are finished with selecting your features, click the 'Next' button to generate your custom installer package.



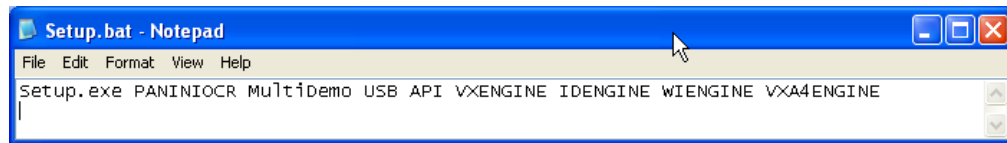
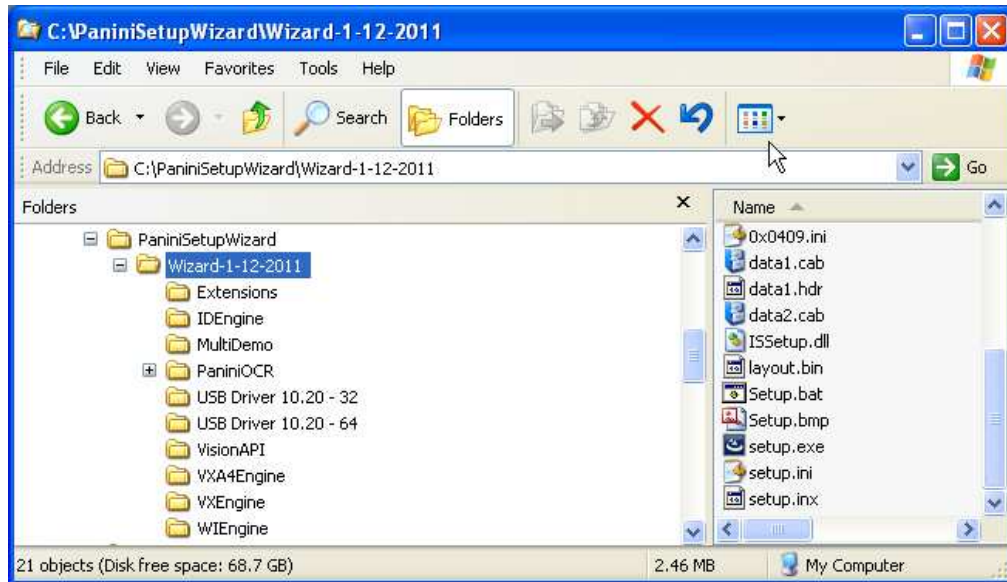
6. You should then see a 'Generating Custom Installer Package' message. Please wait while the necessary files are copied to your destination location.



7. On the next screen click the 'Finish' button to close out the wizard.



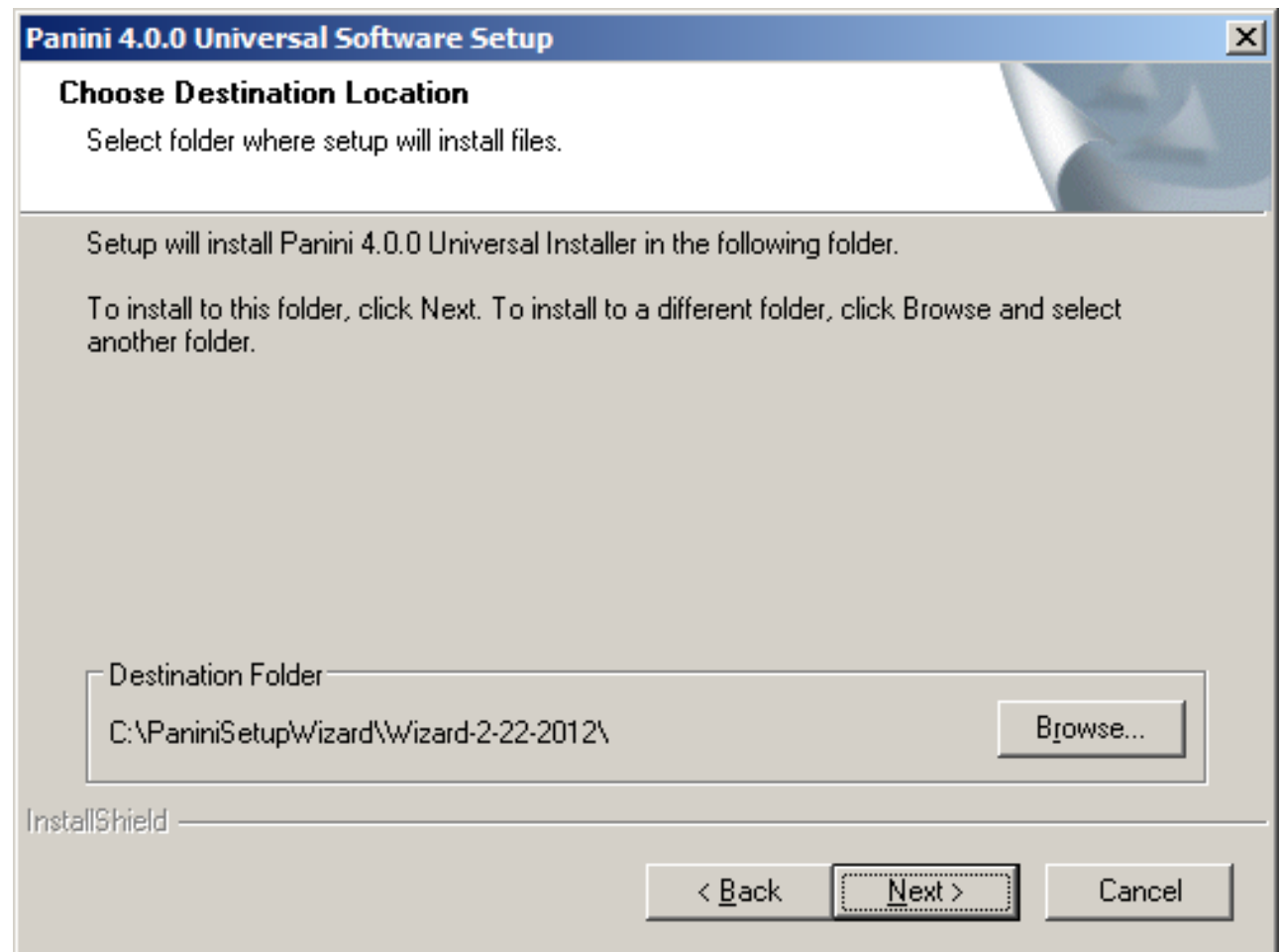
8. Go to your destination location and you will see all of the files needed for running your custom installer package. You will also see a 'Setup.bat' file which can be run to automatically run 'Setup.exe' with the correct command line options or you can copy the command line options from the 'Setup.bat' file to embedded into your own method of launching the 'Setup.exe' with command line parameters.



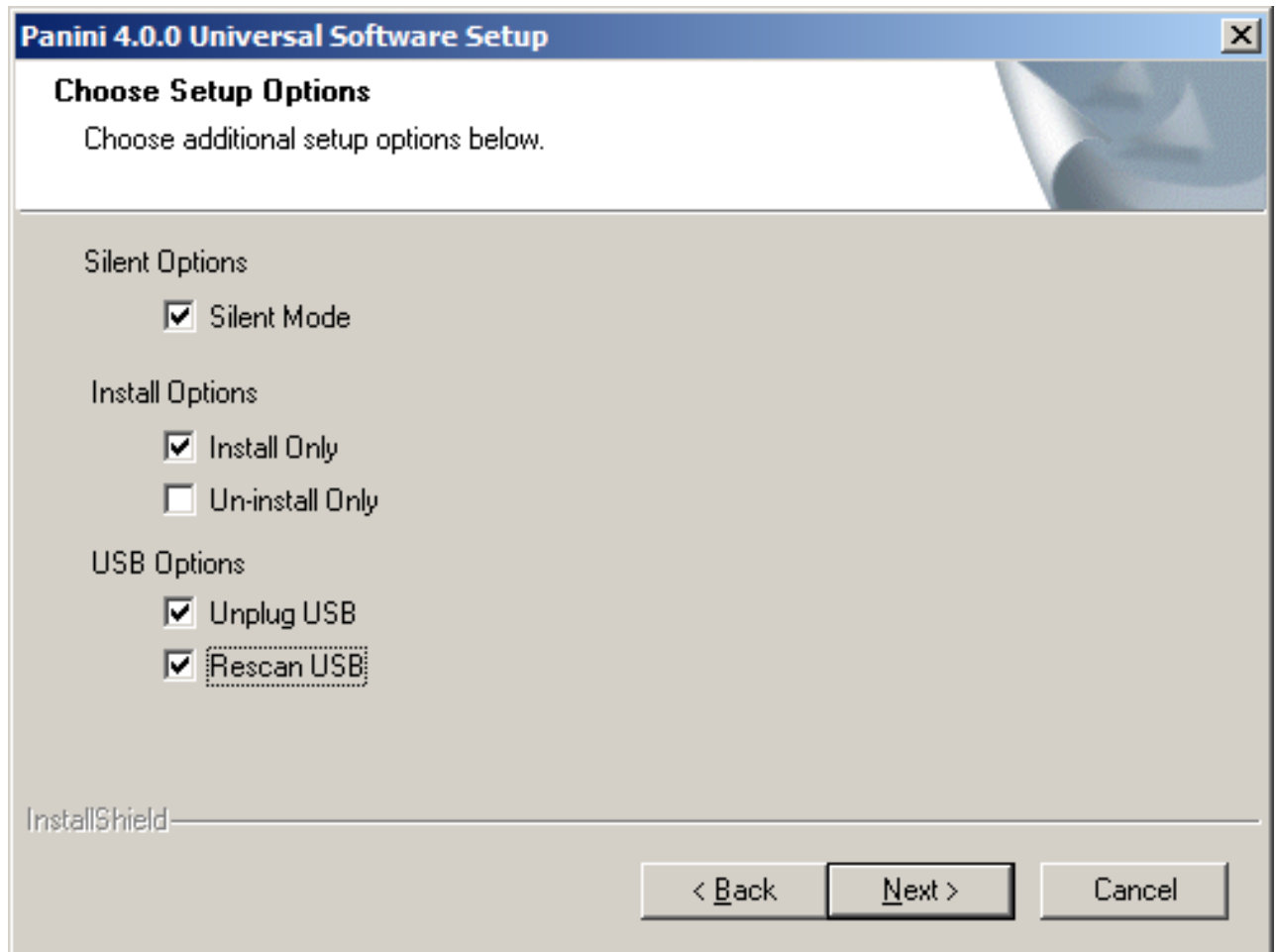
### Wizard Mode Example – Simple Custom Installer Example

In this example, we will create a custom package that does not contain the PaniniOCR, or Demo applications. We are having this created in a folder called 'Custom Package' on the 'C' drive.

When the destination location dialog is shown, click on the 'Browse...' button to select another location. In this case, we are using a folder located at "C:\Custom Package."

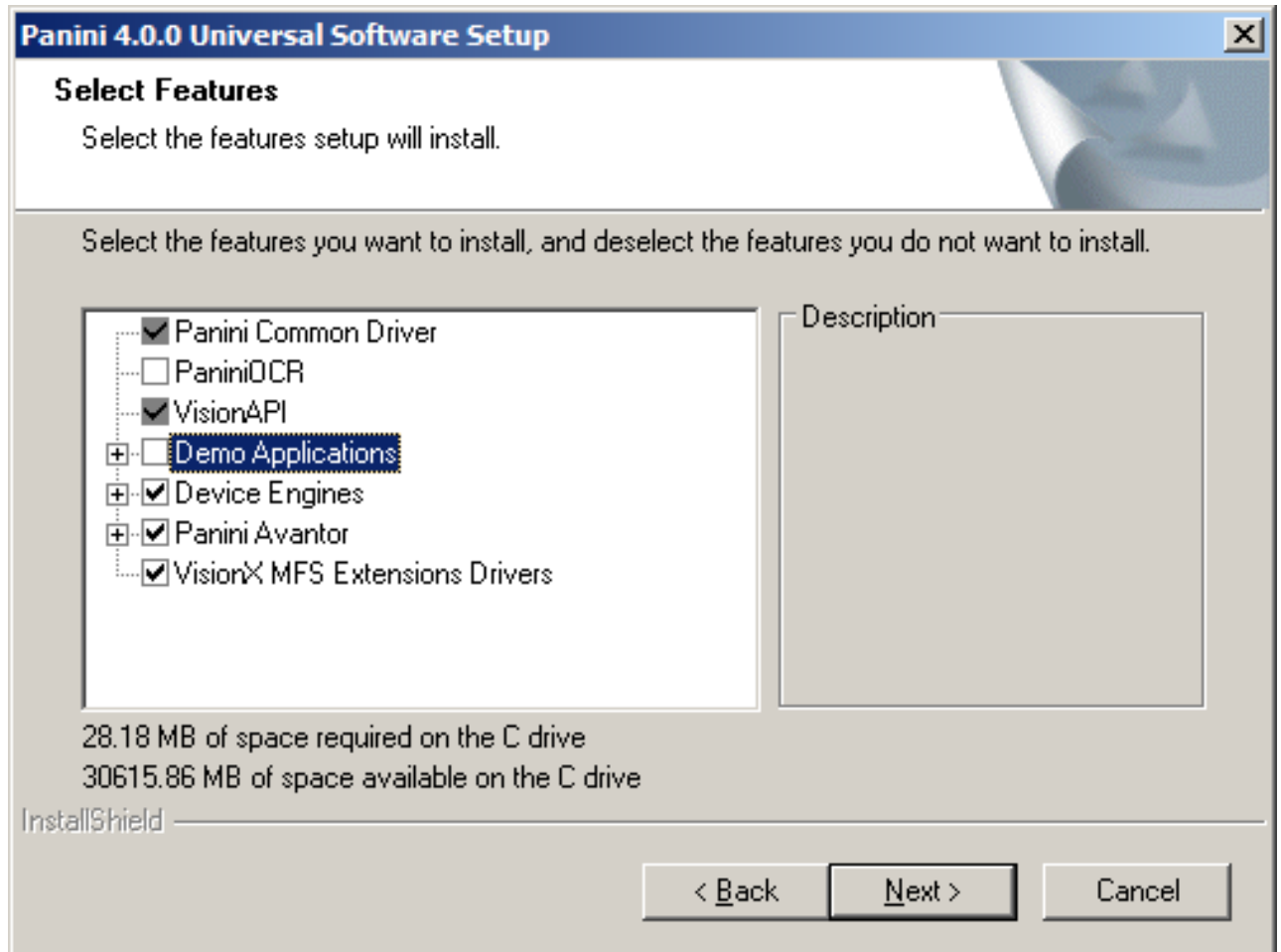


At the 'Setup Options' dialog, when then select 'Silent Mode,' 'Install Only,' 'Unplug USB' and 'Rescan USB.'





At the 'Select Features' dialog, uncheck 'PaniniOCR' and 'Demo Application.'

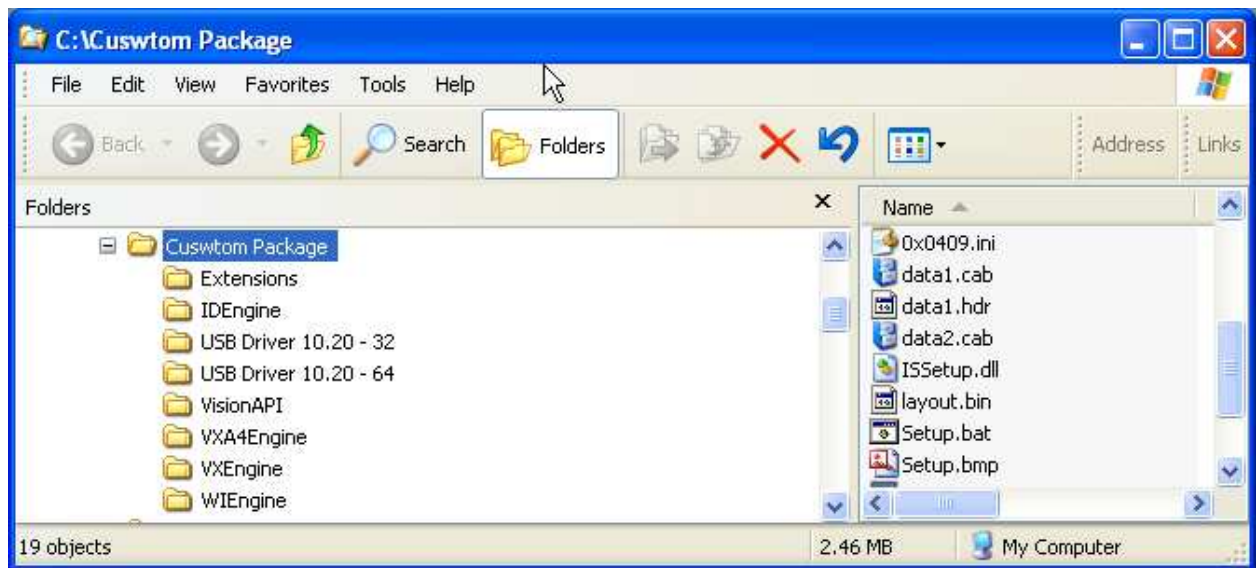


Continue on to generate the custom installer.



Generating Custom Installer Package

If we open up our destination location, you can now see that there is not a PaniniOCR, MyDemo or IDemo folders.



If you look at your setup.bat file you can now see the new command line parameters that specify the options you selected.

